

PHOTOMETRIC TEST REPORT

DECOR PRO ROUND FIXED -
TEXTURED WHITE - 4002723

astro

DECOR PRO ROUND FIXED - TEXTURED

astro

LIGHT EFFICIENCY:

77 Lumen/Watt

LIGHT QUALITY:

CRI: 94.8

COLOR TEMPERATURE:

2735 K

OUTPUT: 904 lm

PEAK: 1719 cd

POWER: 11.7 W

PF: 0.95



Tracking number: [n/a](#)

Product name:

Decor Pro Round Fixed - Textured White - 4002723

Item number:

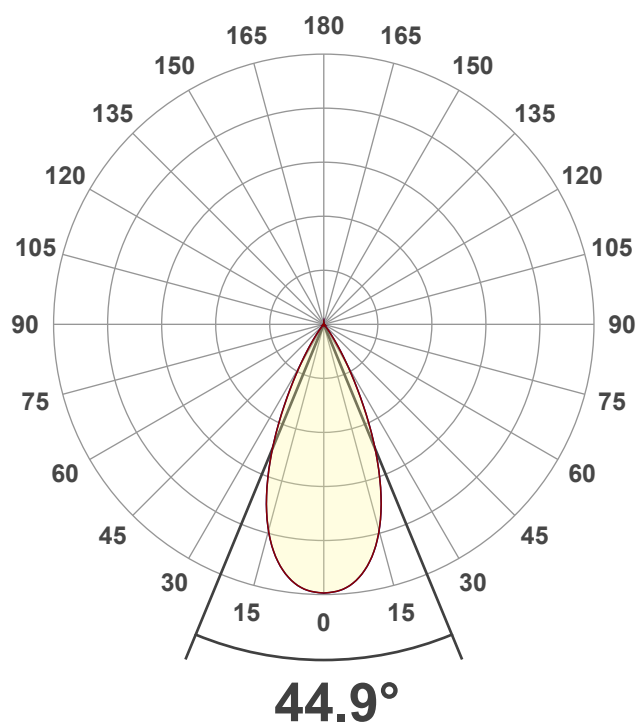
DRF-TW-HQ27G1-50G1-X-D1

Date and time:

31/01/2025 09:46:02

Description:

IP20 LED Downlight

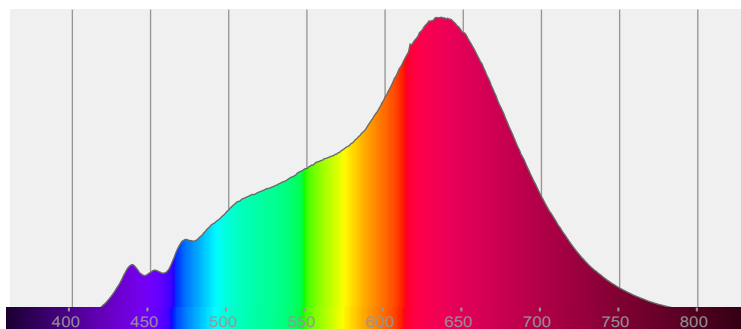


44.9°

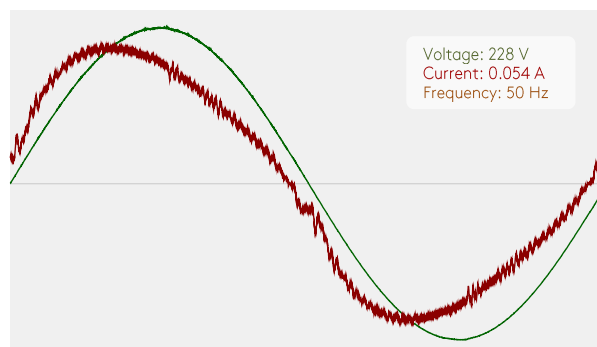


CIE 1931
x: 0.457
y: 0.410

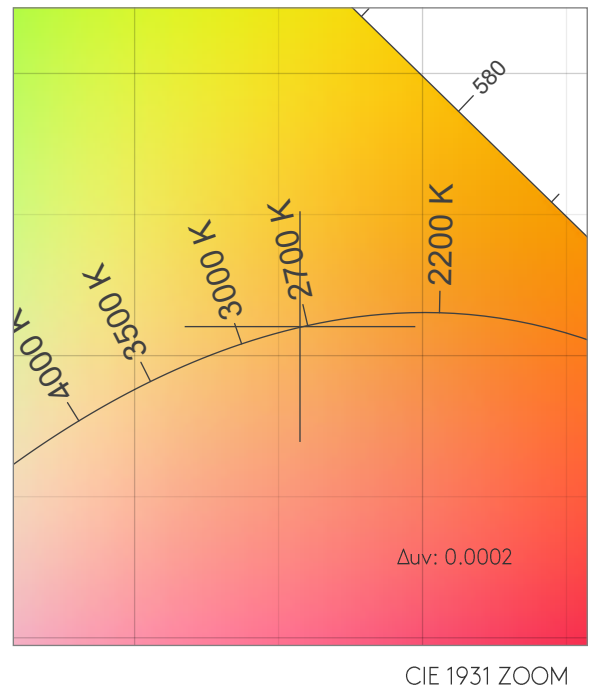
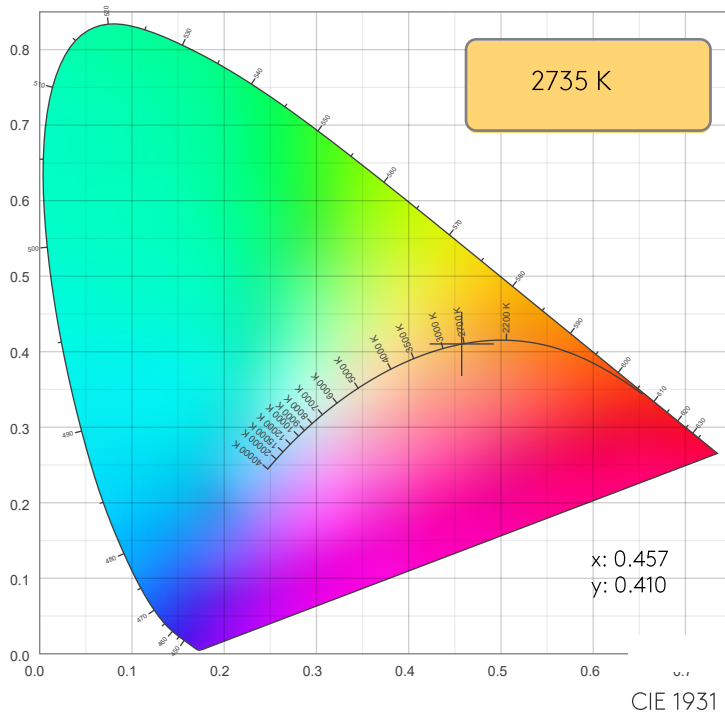
SPECTRA



POWER

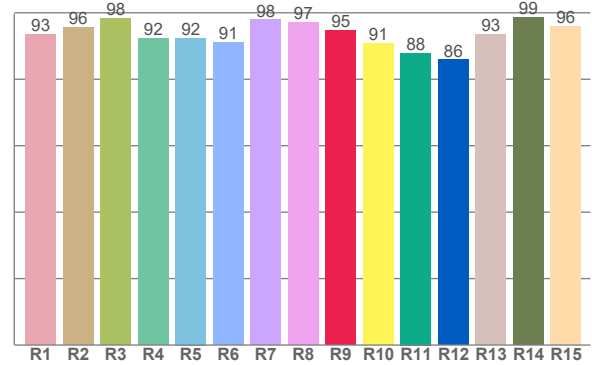
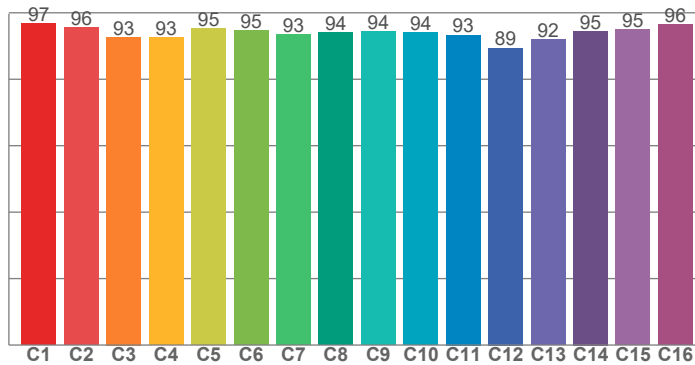


COLOR DETAILS



TM30: 94.2

CRI: 94.8 (R1-R8)



CRI R values, only R1-R8 are used to calculate final CRI value

R1	R2	R3	R4	R5	R6	R7	R8	R9	R10	R11	R12	R13	R14	R15
93.5	95.6	98.4	92.4	92.4	91.1	97.9	97.1	94.6	90.8	87.9	85.9	93.4	98.6	95.9

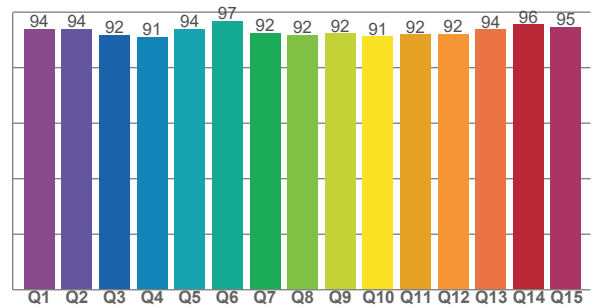
TM30 C values, 16 binned values out of total of 99 C values

C1	C2	C3	C4	C5	C6	C7	C8	C9	C10	C11	C12	C13	C14	C15	C16
96.8	95.6	92.7	92.6	95.4	94.7	93.5	94.0	94.4	94.1	93.3	89.4	92.0	94.5	94.9	96.4

CQS Q values

Q1	Q2	Q3	Q4	Q5	Q6	Q7	Q8	Q9	Q10	Q11	Q12	Q13	Q14	Q15
93.9	93.9	91.8	91.1	94.0	96.9	92.5	91.8	92.2	91.3	92.0	92.1	93.8	95.6	94.6

CQS: 92.9



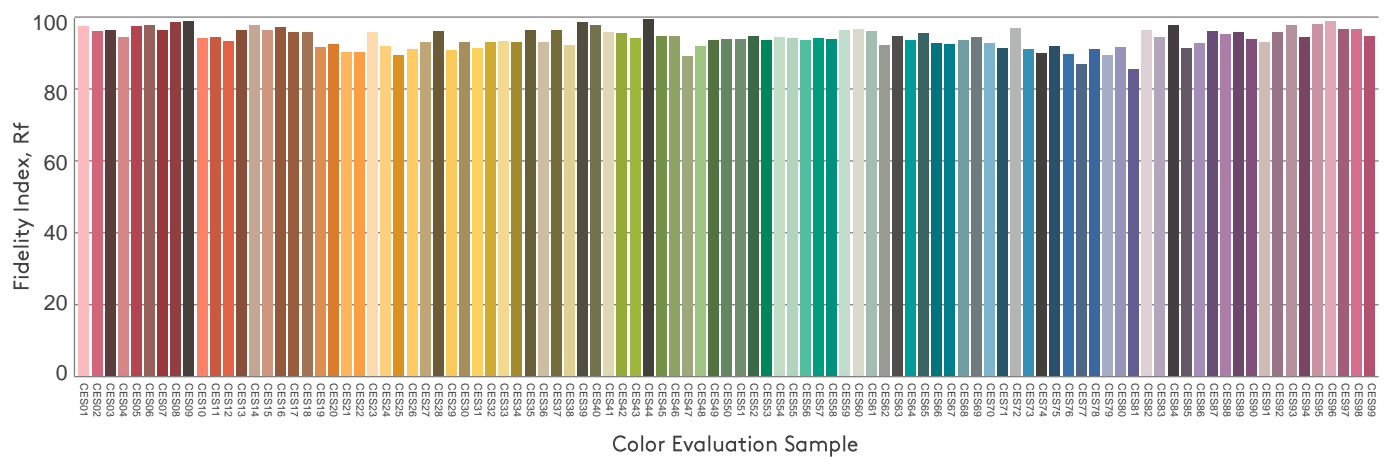
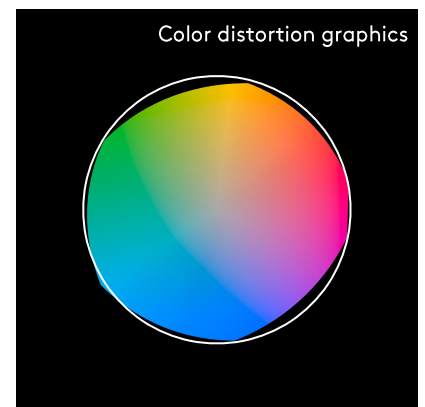
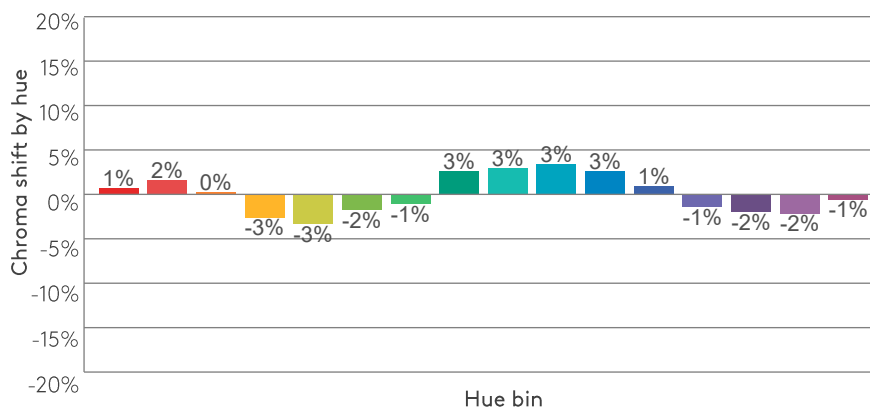
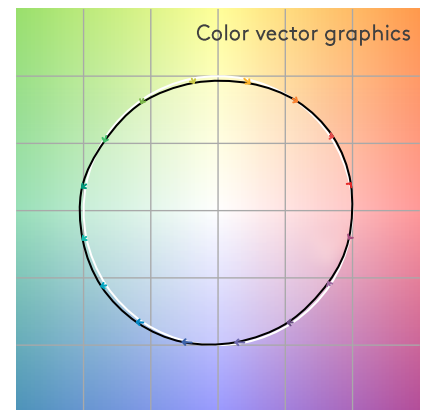
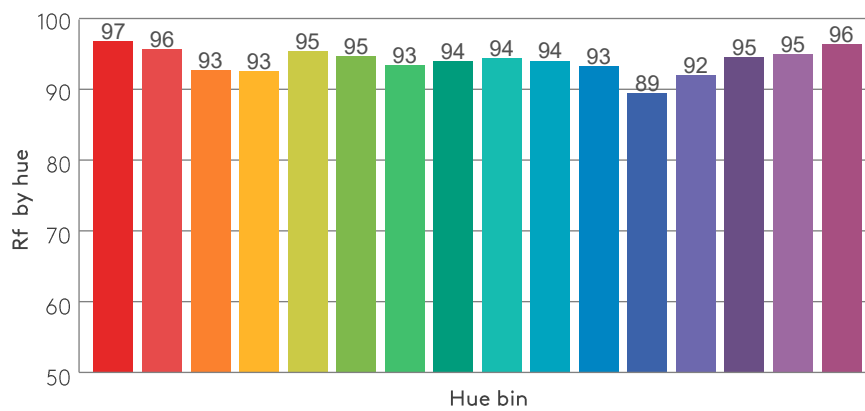
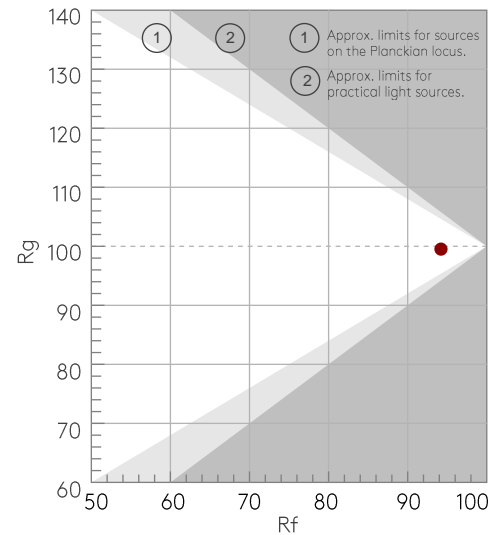
COLOR PARAMETERS

Color temperature	Color rendering index	Red component	Color fidelity	Color gamut	Color quality scale	Color coordinate cie 1931	Color coordinate cie 1931	Color coordinate	Color coordinate	Color deviation from black body
CCT	CRI	CRI R9	TM30 Rf	TM30 Rg	CQS	x	y	u	v	Δuv
2735 K	94.8	94.6	94.2	99.5	92.9	0.457	0.410	0.261	0.351	0.0002

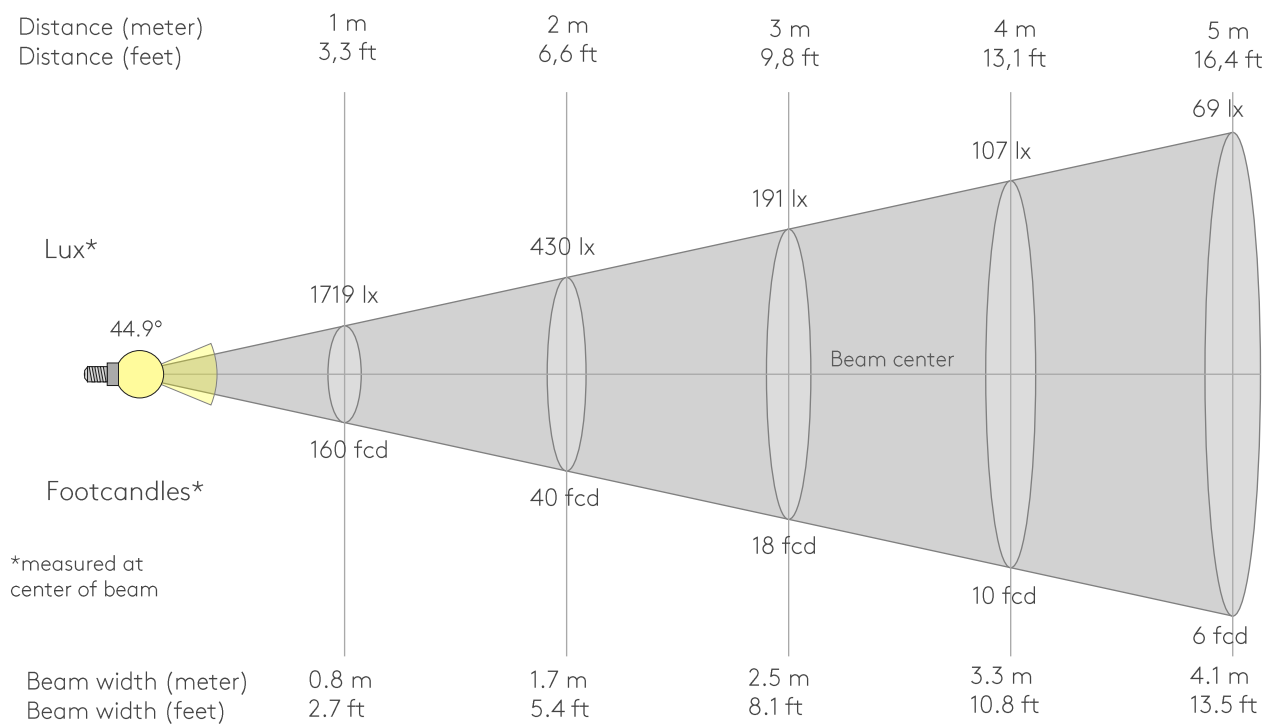
Rf 94.2
Fidelity index Rf

Rg 99.5
Gammut index Rg

Hue Bin	Rf	Graphic shifts (%)	
		Chroma	Hue
1	97	1%	1%
2	96	2%	-2%
3	93	0%	-4%
4	93	-3%	-4%
5	95	-3%	-1%
6	95	-2%	3%
7	93	-1%	4%
8	94	3%	3%
9	94	3%	2%
10	94	3%	-1%
11	93	3%	-4%
12	89	1%	-7%
13	92	-1%	-6%
14	95	-2%	-3%
15	95	-2%	1%
16	96	-1%	-1%



BEAM DETAILS



Beam intensities from 1-20m

1m	2m	3m	4m	5m	6m	7m	8m	9m	10m	11m	12m	13m	14m	15m	16m	17m	18m	19m	20m
3.3ft	6.6ft	9.8ft	13.1ft	16.4ft	19.7ft	23ft	26.2ft	29.5ft	32.8ft	36.1ft	39.4ft	42.7ft	45.9ft	49.2ft	52.5ft	55.8ft	59.1ft	62.3ft	65.6ft
1719lx	430lx	191lx	107lx	69lx	48lx	35lx	27lx	21lx	17lx	14lx	12lx	10lx	9lx	8lx	7lx	6lx	5lx	5lx	4lx
159.7fcd	39.9fcd	17.7fcd	10fcd	6.4fcd	4.4fcd	3.3fcd	2.5fcd	2fcd	1.6fcd	1.3fcd	1.1fcd	0.9fcd	0.8fcd	0.7fcd	0.6fcd	0.6fcd	0.5fcd	0.4fcd	0.4fcd

Intensities in 0° c-plane

0°	2°	4°	6°	8°	10°	12°	14°	16°	18°	20°	22°	24°	26°	28°	30°	32°	34°	36°	38°
1719	1715	1701	1675	1634	1578	1506	1418	1311	1187	1047	894	734	574	428	305	203	127	74	37
100%	100%	99%	97%	95%	92%	88%	82%	76%	69%	61%	52%	43%	33%	25%	18%	12%	7%	4%	2%

Intensities in 90° c-plane

0°	2°	4°	6°	8°	10°	12°	14°	16°	18°	20°	22°	24°	26°	28°	30°	32°	34°	36°	38°
1719	1715	1701	1675	1634	1578	1506	1418	1311	1187	1047	894	734	574	428	305	203	127	74	37
100%	100%	99%	97%	95%	92%	88%	82%	76%	69%	61%	52%	43%	33%	25%	18%	12%	7%	4%	2%

Intensities in 180° c-plane

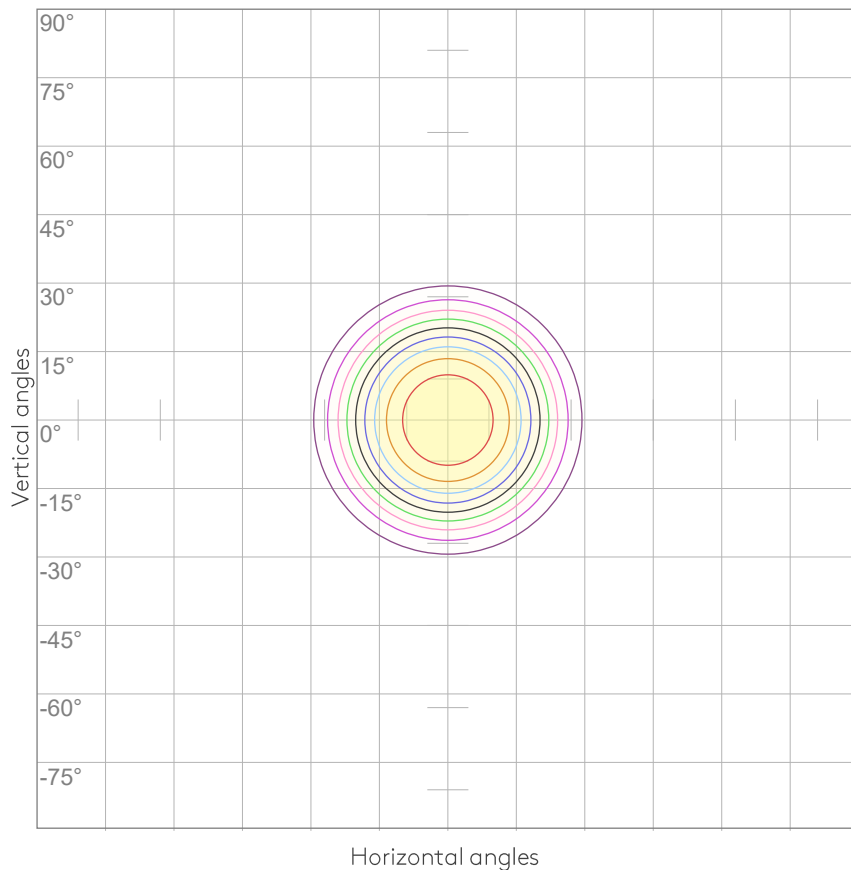
0°	2°	4°	6°	8°	10°	12°	14°	16°	18°	20°	22°	24°	26°	28°	30°	32°	34°	36°	38°
1719	1715	1701	1675	1634	1578	1506	1418	1311	1187	1047	894	734	574	428	305	203	127	74	37
100%	100%	99%	97%	95%	92%	88%	82%	76%	69%	61%	52%	43%	33%	25%	18%	12%	7%	4%	2%

Intensities in 270° c-plane

0°	2°	4°	6°	8°	10°	12°	14°	16°	18°	20°	22°	24°	26°	28°	30°	32°	34°	36°	38°
1719	1715	1701	1675	1634	1578	1506	1418	1311	1187	1047	894	734	574	428	305	203	127	74	37
100%	100%	99%	97%	95%	92%	88%	82%	76%	69%	61%	52%	43%	33%	25%	18%	12%	7%	4%	2%

Beam angle 50%	Field angle 10%	Cutoff angle 2,5%	Intensity ratio in 120° cone	Intensity ratio in 90° cone
44.9°	65.5°	75.3°	99.8%	99.6%

ISO CANDELA DIAGRAM



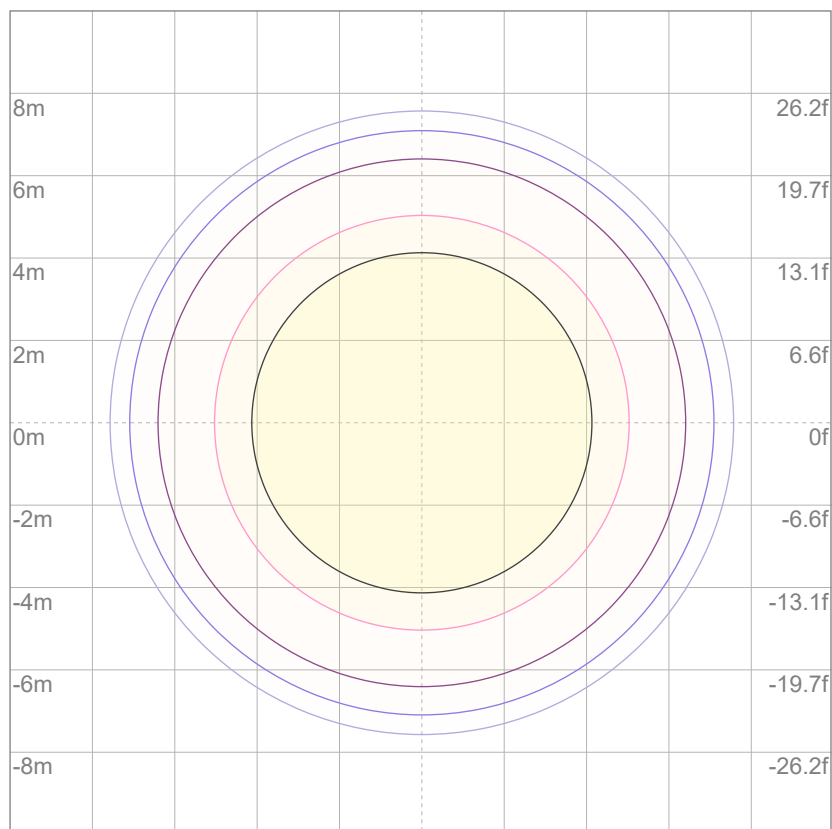
10%	172 cd
20%	344 cd
30%	516 cd
40%	688 cd
50%	860 cd
60%	1032 cd
70%	1204 cd
80%	1376 cd
90%	1548 cd

Conditions:

Number of c-planes: 8

Candela at center: 1719 cd

ISO LUX DIAGRAM



Mounting height: 10 meters (33 feet)

3%	0.516 lx
5%	0.860 lx
10%	1.72 lx
30%	5.16 lx
50%	{LUX_10M50} lx

Conditions:

Number of c-planes: 8

Lux at center: 17.2 lx

Lux distribution on a surface when lamp is mounted at 10 meters from the surface.

UGR

GLARE EVALUATION ACCORDING TO UGR

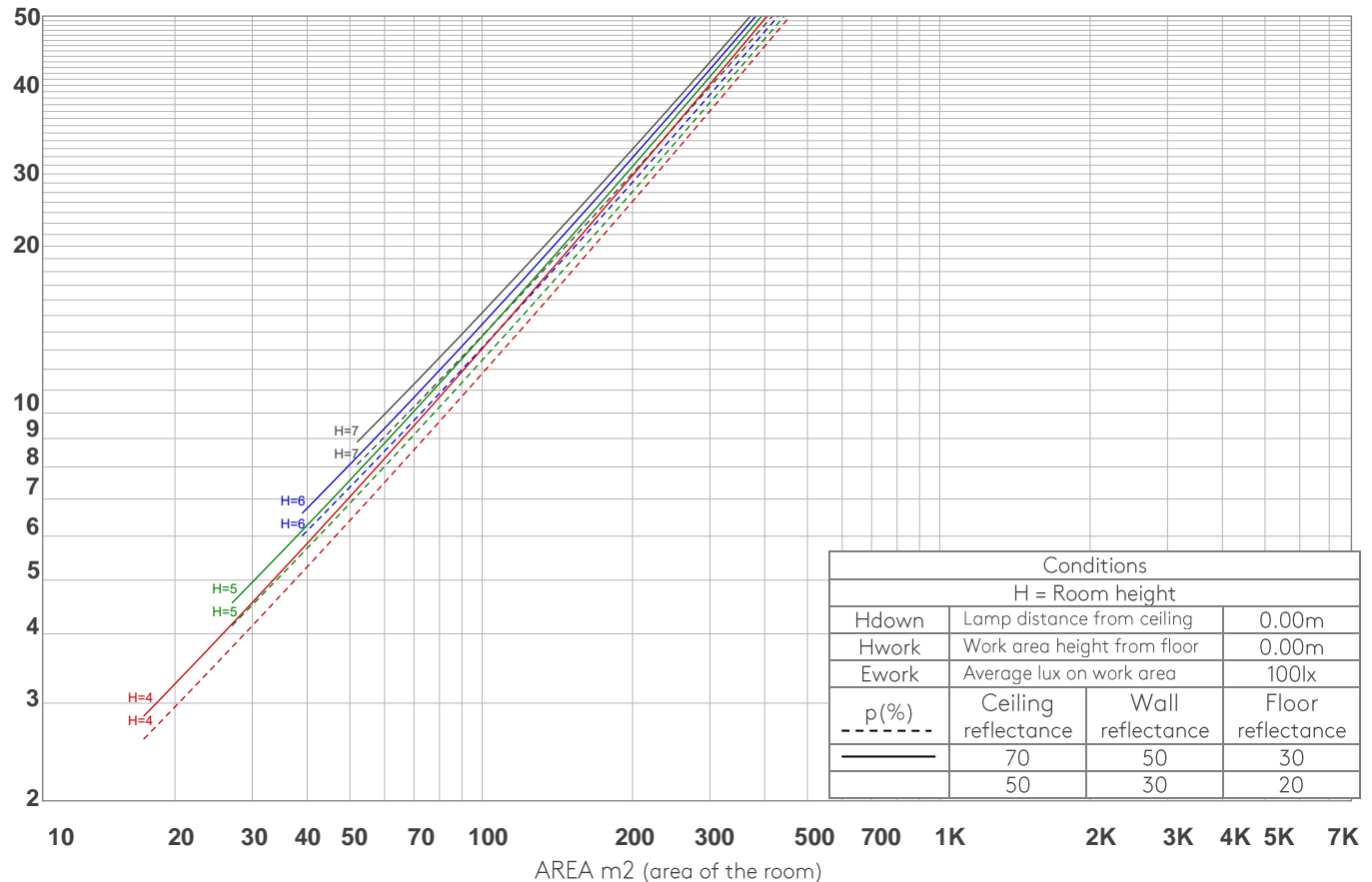
p Ceiling		70	70	50	50	30	70	70	50	50	30
p Walls		50	30	50	30	30	50	30	50	30	30
p Floor		20	20	20	20	20	20	20	20	20	20
Room size X Y		Viewing direction at right angles to lamp axis					Viewing direction parallel to lamp axis				
2H	2H	16.4	16.8	16.4	17.1	17.2	16.4	16.8	16.4	17.1	17.2
	3H	16.0	16.7	16.4	16.9	17.1	16.0	16.7	16.4	16.9	17.1
	4H	16.0	16.6	16.4	16.8	17.0	16.0	16.6	16.4	16.8	17.0
	6H	16.0	16.5	16.3	16.8	17.1	16.0	16.5	16.3	16.8	17.1
	8H	15.9	16.4	16.2	16.7	17.1	15.9	16.4	16.2	16.7	17.1
	12H	15.9	16.3	16.2	16.7	17.1	15.9	16.3	16.2	16.7	17.1
4H	2H	16.0	16.6	16.4	16.8	17.0	16.0	16.6	16.4	16.8	17.0
	3H	15.9	16.3	16.2	16.7	17.1	15.9	16.3	16.2	16.7	17.1
	4H	15.7	16.2	16.1	16.6	17.1	15.7	16.2	16.1	16.6	17.1
	6H	15.6	16.1	16.1	16.4	16.8	15.6	16.1	16.1	16.4	16.8
	8H	15.6	16.0	16.1	16.4	16.7	15.6	16.0	16.1	16.4	16.7
	12H	15.5	15.8	16.0	16.3	16.7	15.5	15.8	16.0	16.3	16.7
8H	4H	15.6	16.0	16.1	16.4	16.7	15.6	16.0	16.1	16.4	16.7
	6H	15.5	15.8	16.0	16.2	16.8	15.5	15.8	16.0	16.2	16.8
	8H	15.5	15.7	16.0	16.2	16.9	15.5	15.7	16.0	16.2	16.9
	12H	15.4	15.6	16.0	16.1	16.7	15.4	15.6	16.0	16.1	16.7
12H	4H	15.5	15.8	16.0	16.3	16.7	15.5	15.8	16.0	16.3	16.7
	6H	15.5	15.7	16.0	16.2	16.9	15.5	15.7	16.0	16.2	16.9
	8H	15.4	15.6	16.0	16.1	16.7	15.4	15.6	16.0	16.1	16.7
Variation of the observer position for the luminaire distance S											
S = 1.0H		6.6 / -20.0					6.6 / -20.0				
S = 1.5H		9.4 / -22.2					9.4 / -22.2				
S = 2.0H		11.4 / -23.3					11.4 / -23.3				
Standard table		n/a					n/a				
Correction summand		n/a					n/a				
Corrected glare indices referring to 904 lm total luminous flux											

COEFFICIENTS OF UTILIZATION

Ceiling reflectance	80				70				50			30			10			0
Wall reflectance	70	50	30	10	70	50	30	10	50	30	10	50	30	10	50	30	10	0
Floor reflectance	20	20	20	20	20	20	20	20	20	20	20	20	20	20	20	20	20	0
RCR	(RCR: Room Cavity Ratio) Room Values are expressed as percentage of Lumens delivered to the task surface																	
0	119	119	119	119	116	116	116	116	111	111	111	106	106	106	102	102	102	100
1	114	112	110	108	112	110	108	106	106	104	103	102	101	100	99	98	97	95
2	110	106	102	99	108	104	101	98	101	98	96	98	96	94	95	93	92	90
3	105	100	96	93	104	99	95	92	96	93	90	94	91	89	92	89	88	86
4	101	95	90	87	100	94	90	86	92	88	85	90	87	84	88	85	83	82
5	97	90	85	82	96	89	85	82	88	84	81	86	83	80	85	82	79	78
6	94	86	81	78	92	85	81	77	84	80	77	83	79	76	81	78	76	75
7	90	82	77	74	89	82	77	74	80	76	73	79	76	73	78	75	72	71
8	87	79	74	70	85	78	73	70	77	73	70	76	72	70	75	72	69	68
9	83	75	70	67	82	75	70	67	74	70	67	73	69	66	72	69	66	65
10	80	72	67	64	79	72	67	64	71	67	64	70	66	64	70	66	64	62

LAMPS (number of lamps)

LUMINAIRE BUDGETARY DIAGRAM



ZONAL LUMEN SUMMARY

0°-10°	10°-20°	20°-30°	30°-40°	40°-50°	50°-60°	60°-70°	70°-80°	80°-90°
158 lm	374 lm	295 lm	70.8 lm	3.86 lm	0.890 lm	0.175 lm	0.062 lm	0.072 lm
90°-100°	100°-110°	110°-120°	120°-130°	130°-140°	140°-150°	150°-160°	160°-170°	170°-180°
0.068 lm	0.072 lm	0.081 lm	0.119 lm	0.236 lm	0.384 lm	0.419 lm	0.288 lm	0.086 lm

FLICKER

FLICKER CURVE (COMPLETE SAMPLED)



FLICKER FRAME (FRAME OF ONE FLICKER)



FLICKER FFT (FREQUENCY SCOPE OF FLICKER)



FLICKER RESULTS:

Flicker frequency:	n/a Hz
Flicker index:	n/a
Flicker percentage:	n/a %
SVM: (Visual flicker)	n/a

FLICKER CONDITIONS:

Sample rate:	n/a samples/second
--------------	--------------------